

Universities Partnership Showcase Webinar

Donna Worship, Universities Partnership Manager

Universities Partnership – key achievements and next steps

Sarah Hannaford, Associate Director of Marketing & Advancement,
Loughborough University

Sarah Thomson, Director of Engagement, DMU

Paul Angrave, Associate Director of Public Affairs, University of Leicester



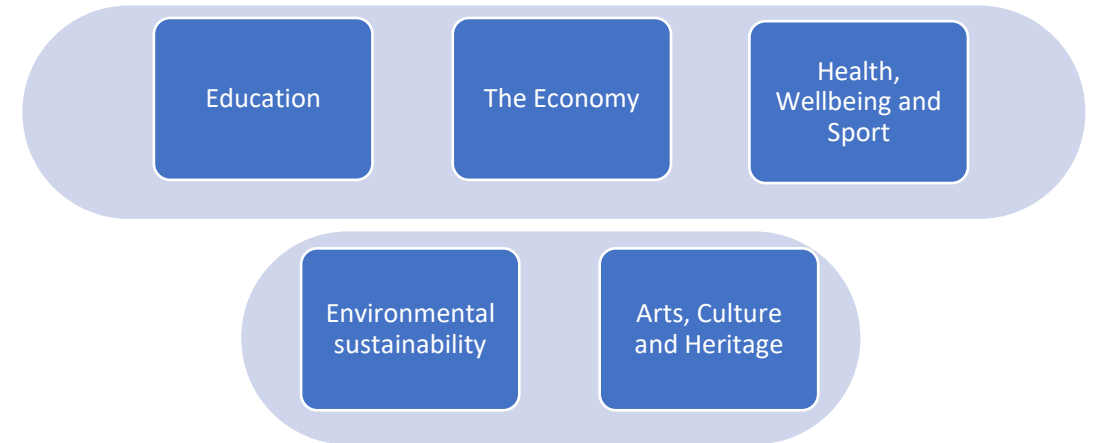
Background

- Civic University Commission launched in 2018
- Key recommendation was for universities to develop 'civic university agreements' in partnership with local leaders
- Agreements to be focussed on the needs of the local community
- Aims to ensure that our teaching, research and assets benefit the local community
- Partnership between De Montfort University, Loughborough University, and the University of Leicester and five local authorities
- Launched on 28 June 2022
- Full agreement published via www.universitiespartnership.org



Themes

- Mapped based on local needs, strengths of the universities, and local consultations
- Themes Group structure



- Theme Groups comprised of academic and professional leads from each university, and partner representatives



Management and governance

- **Universities Partnership Steering Group**
 - External steering group with local authority partners and universities
- **Universities Partnership Board**
 - University-led management group with university staff
- **Five Theme Groups**
 - Comprised of academic and professional leads from each university, and partner representatives
- **Universities Partnership Manager**
 - Appointed in June 2023



Key progress

- a. Agreement has paved way for collaborative working practices across the region and our universities
- b. Research and stakeholder engagement undertaken to inform the direction of the partnership, based on local need
- c. Flagship projects and activities delivered
- d. External funding secured from multiple sources to enable delivery of projects
- e. Year 1 annual report produced



Harnessing procurement for the civic good


- Project to utilise our collective procurement power to leverage social value for communities
- Universities spent more than £300m with their supply chain in 2022/23
- Embeds social value submission into tenders over £100k via the 'Social Value Portal' (e.g. volunteering, internships, sustainable and positive working practices)
- New policies to enable more local SME procurement



Universities Partnership International



- Project to promote our region as a destination for global higher education
- 50 higher education partners from across the world
- Events and activities to highlight what our region has to offer to international students
- Supported by local leaders, civic representatives, and the Lord Lieutenant of Leicestershire
- Leicester is seen as an attractive destination
- All three universities are signatories to the UK Agent Quality Framework



Net Zero Collaboration

- Local partnership to support delivery of Net Zero targets and tackle climate emergency, led by Leicestershire County Council
- £2.5 million funding secured from Innovate UK (£500,000 to UP partners to deliver its elements)
- University of Leicester to deliver a Net Zero Advice Hub for businesses and the community
- DMU to oversee governance and climate emergency partnership
- Begins 1 March 2024





VentureVersity

- Aim to boost the local innovation landscape and culture
- £330,000 funding from Research England
- Will support start ups to pioneer new products, services and business ideas
- Universities will share IP and ideas with a community of businesses, graduates and students, adopting an open innovation approach
- Will enable the accelerated commercialisation of research ideas





Wider impact

Supporting local schools and young people

- Research to understand needs of local schools
- Programme of outreach and support to widen participation and raise attainment

Supporting sustainable business practices

- Student led impact assessments
- Responsible Business Toolkit

Graduate retention

- Support the regional economy by retaining graduate talent

Arts, culture and heritage

- Active heritage trails and consultation with the sector



External funding successes

- Partnership depends on external funding to support projects
 - Partnership and collaborative approach enables stronger joint funding bids
- I. Economic and Social Research Council (ESRC) (£100k for initial consultation and research)
 - II. VentureVersity (£330k from Research England)
 - III. ESRC Impact Accelerator Account (£100k over 5 years)
 - IV. National Civic Impact Accelerator Action Learning Programme (£5k)
 - V. Leicestershire Collaborate to Accelerate Net Zero with Leicestershire County Council (£500k)



Emerging projects 2024/25

- I. Deliver 'Evolve' targeted attainment raising pilot in schools
- II. Open call for community arts programme and story-telling project
- III. Develop student-led social action project proposal
- IV. Develop a Creative Clusters bid
- V. Host events to convene partners and support knowledge transfer e.g. tourism
- VI. Provide support and collaborate with the Prince's Trust on education, employability and enterprise
- VII. Libraries collaboration
- VIII. [Co\(I\)laboratory](#) project with Universities for Nottingham

Education

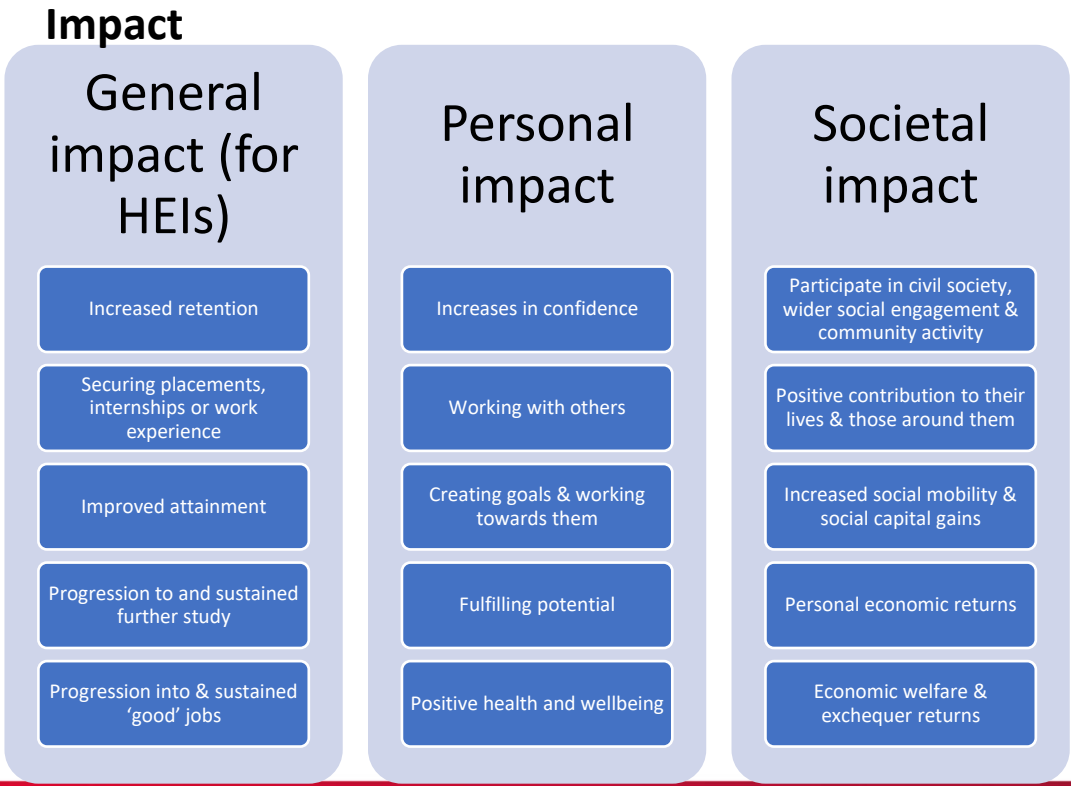
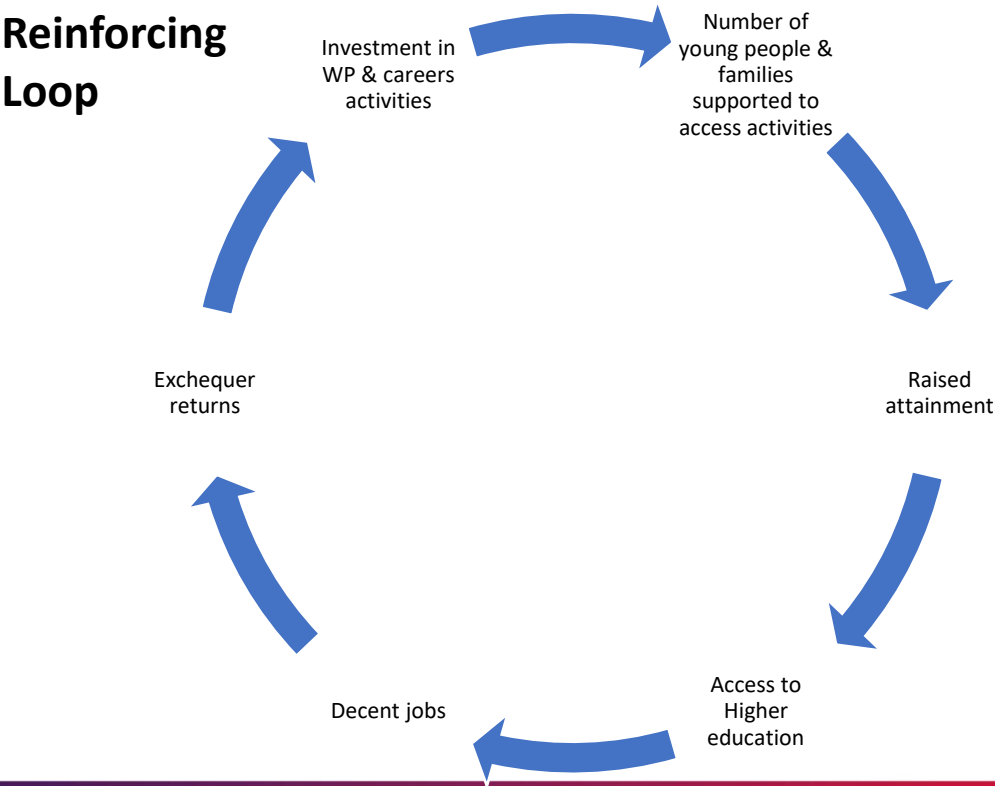
Jess Bovic, Pathways Manager

Education Theme Group - Context and who the group are?

- Chaired by Elliot Newstead Associate Director of Future Students at De Montfort University.
- Wider colleagues on the group represent the 3 universities and members of the Pathways team.
- The Pathways programme (UniConnect collaborative outreach partnership operating across Leicester, Leicestershire and Rutland) is the current main delivery output from the Education Theme Group.
- Collaboration is key – links to wider areas of Education locally

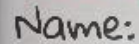
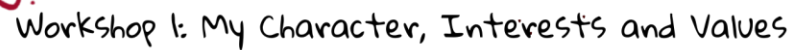
Theory of Change (TOC)

- Summer 23 – shaped the work of the group by going through a TOC process
- Collaborative in nature and large consultation of key stakeholders involved.



Collaborative Attainment Raising programme – Evolve – Your Skills to Success

- Focus priorities around supporting the Attainment of learners locally.
- Academic year 24/25 – programme will be delivered in 4 schools across the region.
Programme is delivered across 7 weeks of an academic year, with sustained and progressive delivery from Year 7 through to Year 9.
- Focus on self-regulated learning and study skills to support learners to attain better.
- Full evaluation of the programme is being designed to ensure capturing the impact of the programme.



Form:

Environmental Sustainability

Dr Andrew Reeves, Associate Professor, Institute of Energy and Sustainable Development (IESD)

Environmental Sustainability: Scope of Theme

Aim: To maximise the Environmental Sustainability of Leicester and Leicestershire through developing and delivering collaborative projects

Focus areas:

1: Local support for climate action.

2: Sustainability Skills for local organisations.

3: Nature Recovery and Biodiversity



Linking all actions to the UN Sustainable Development Goals (SDGs).

Activities in first 18 months

Sustainability Skills Development



Responsible Business Support



Nature Recovery and Biodiversity



Community and Partnerships



Knowledge Exchange



- **61** SME employees Carbon Literacy Accredited
 - **107** student sustainability auditors
 - **12** university careers staff trained in green careers
 - **3** x sector-specific training courses developed
- Free resource toolkit
 - Decarbonisation plans
 - Graduate training programme
 - Sustainability audits
- 3 student projects
 - 1 x research projects
 - 2 x Bioblitz events
 - 2 interdisciplinary workshops
- 3 partner-driven projects
 - 6 workshops
 - 6 event presentations

See: <https://universitiespartnership.org/responsible-business/> and <https://universitiespartnership.org/home/environmental-sustainability>

Leicestershire Collaborate to Accelerate Net Zero (LCAN)

- £2.5m project, funded by Innovate UK, led by Leics County Council
 - Partners: Universities Partnership, Energy Systems Catapult, National Grid, Green Fox Community Energy, Community Energy South
 - 21 months: March 2024 to November 2025
- Aim: “Creating an environment for well-planned, deliverable, impactful place-based net zero interventions in Leicestershire, replicable in other places”
- Engaging with stakeholders on user needs in next months



Upcoming

- Carbon Literacy
 - ‘Community Leaders’ Carbon Literacy Training (free)
 - Voluntary / community sector, June 2024 and beyond
 - ‘Train the Trainer’ one-day course – autumn 2024
- Sustainability Audits
 - Site visit and short report with recommendations

Contact: areeves@dmu.ac.uk

Questions

Key contact details

Donna Worship, Universities Partnership Manager

donna.worship@leicester.ac.uk

Website: <https://universitiespartnership.org/>